

# Supra



V\_20232911



Zerica reserves the right to make changes without prior warning. ZERICA, BeviLa Natura, Refresh, Thirsty for innovation, i-Wall, Silver Turbo Clean, FRISKA and Mix&Go! are exclusive trademarks and property of ZERICA srl

# Supra

## Taste the goodness every day

**Supra** is a **countertop** water dispensing system that allows you to drink hygiene-assured refreshing water with confidence. Dispensing **ambient, chilled** still and **sparkling** water (Supra 150) at any time of the day or night. **Refreshing** water passed through the **purifying** filter of your choice on dispense for a **great taste** experience.

Ideal for the home or office, ZERICA's **exclusive Silver Turbo Clean** high pressure refrigeration system ensures maximum hygiene levels. Other exclusive technologies ensure near-silent operation so as not to disturb your concentration or moment of calm.

**Supra** is an **eco-friendly** solution that helps reduce your carbon footprint, eliminating the need for plastic bottles.

Discover just how easy it is **to take care of the environment whilst saving time and money**: say goodbye to managing heavy cases of water and dealing with the plastic recycling. Eliminate the need to buy the plastic bottles in the first place.

Choose **Supra** and join ZERICA in promoting positive environmental messages as well as good hydration practices.

Accessorise **Supra** with Friska bottles and carafes to help the environment every day and work to a world without plastic.

**#BETHECHANGE**



\*NSF certified proprietary technology inside

Supra 150

# Supra

## Enabling technologies & key benefits

Discover what we have in store for you...

### Silver Turbo Clean

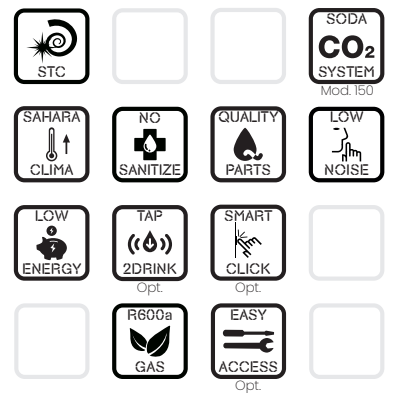
ZERICA's exclusive high pressure sealed refrigeration system with bacteriostatic silver welding. Upon dispense, a water vortex is generated internally preventing biofilm, residue, and bacteria proliferation so zero maintenance needs & no top-ups!

### Low Noise

Uses fans with magnetic suspension for near-silent operation. We won't disturb your moment of calm or interrupt your concentration at home or in the office whether studying or working hard.

### No Sanitize

The intelligent design of this product means that it does not need regular routine maintenance or sanitisation cleaning procedures to be carried out. Hygiene guaranteed and maintenance costs significantly reduced.



ZERICA: assembling an evaporator

# Supra

## Product focus



- 1 LED diagnosis and alert system: warnings, anomalies and expiry info  
Set single-press portion size using SmartClick\*\*
- 2 LED illuminated dispensing area\*
- 3 Adjustable feet to achieve maximum stability
- 4 ABS plastic drip tray with stainless steel grid plate

# Friska

## Talking good hydration

Our bodies are about **60% water**, an obviously critical element to the optimal functionality of us all. Drinking enough water on a daily basis is, therefore, absolutely **essential** to stay in **good health**.

Correct **hydration** helps maintain the delicate **equilibrium** of fluids in the body, regulates temperature and **supports** the digestive system and kidneys. In addition, it **provides** us with energy, **improves** concentration and **promotes** healthy skin.

Using **Supra at work** contributes to your physical and mental wellbeing by ensuring good hydration habits as well as helping eliminate plastic from the environment a sip at a time.

Take **Friska** water bottles and carafes with you though your day and improve your health in an **eco-friendly** way.

Inspired by the Sicilian word 'frisca' (fresh) **Friska** is a new brand from **ZERICA** aimed at encouraging everyone to make healthy choices and respect our precious environment.

Hydrate the right way with ZERICA.



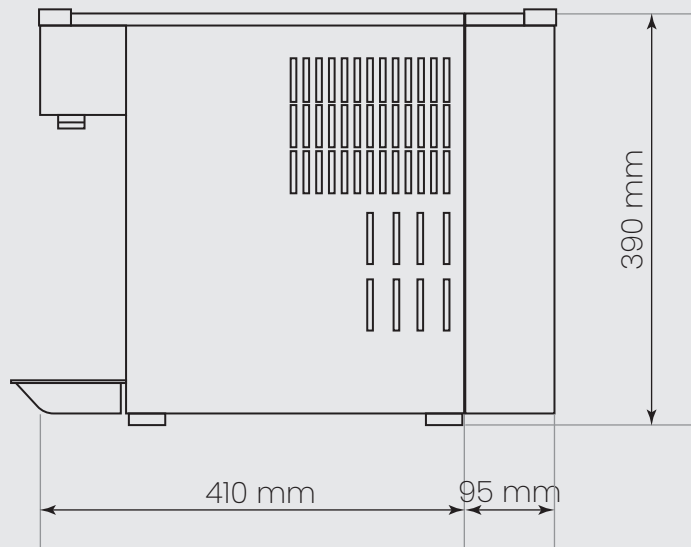
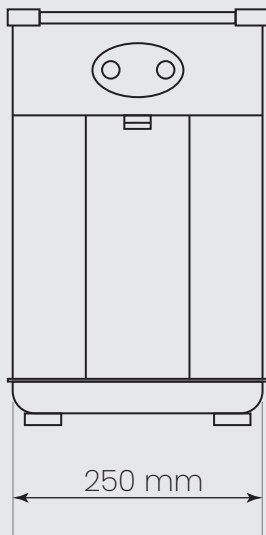
# Supra 140

## Technical specifications

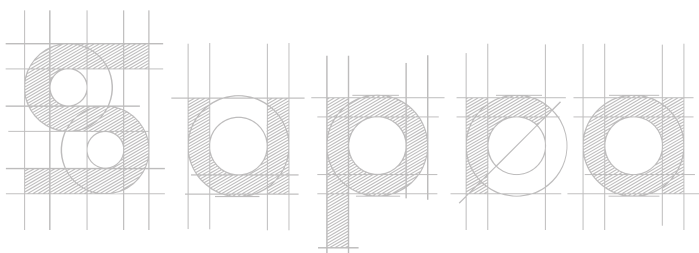
Dispensing	Chilled, ambient
Refrigeration capacity	36 L/hr <sup>‡</sup>
Continuous	4 L <sup>‡</sup>
Water outlet temperature	3 °C ~ 12 °C
Refrigeration system	Silver Turbo Clean
Condensation method	Forced ventilation
Compressor power	1/10 Hp
Refrigerant gas	R600a
Adjustable temperature	✓
External cabinet	Plastic coated galvanized steel
Dispensing technology	Membrane keyboard
Nozzles	1
Dispensing area height	260 mm
Accessories supplied as standard	Drip tray - removable steel front plate schuko power cable
Warning system	✓
LED-illuminated dispensing area	o
Inlets (push-fit)	1/4" F
Mains water pressure	2.5 bar ~ 5 bar
Operating temperature	5 °C ~ 38 °C <sup>§</sup>
Energy consumption	0.66 A   140 W
Power supply voltage	230 V   50 Hz
Energy saving	✓
Volume	< 38 dB
Unit weight   Shipping weight	15 kg   17 kg
Dimensions (cm) - W x D x H	25 x 41 X 39
Packaging dimensions (cm) - W x D x H	27 x 53 x 49
Units per pallet	18

# Supra 140

## Technical drawings



Supra 140 with cabinet



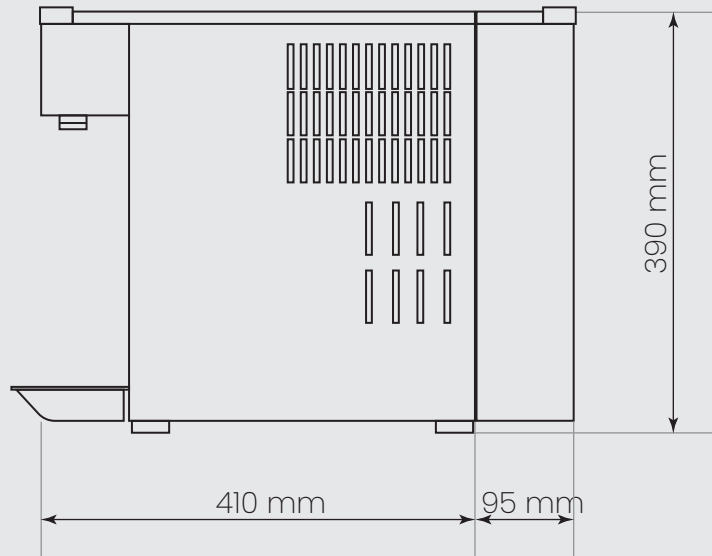
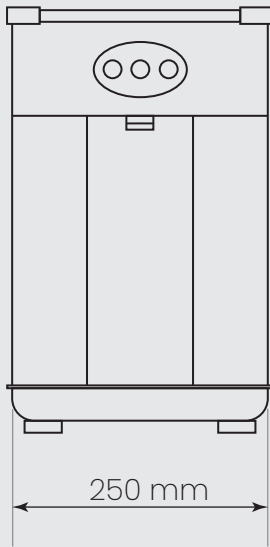
# Supra 150

## Technical specifications

Dispensing	Chilled, ambient, sparkling
Refrigeration capacity	36 L/hr <sup>‡</sup>
Continuous	6 L <sup>‡</sup>
Water outlet temperature	3 °C ~ 12 °C
AISI 304 Stainless steel carbonator	1.4 L
Continuous delivery of sparkling water	✓
Pumps	Professional booster pump
Safety block due to water shortage	✓
Refrigeration system	Silver Turbo Clean
Condensation method	Forced ventilation
Compressor power	1/10 Hp
Refrigerant gas	R600a
Adjustable temperature	✓
External cabinet	Plastic coated galvanized steel
Dispensing technology	Membrane keyboard
Nozzles	1
Dispensing area height	260 mm
Accessories supplied as standard	Drip tray - removable steel front plate schuko power cable
Warning system	✓
LED-illuminated dispensing area	o
Inlets (push-fit)	1/4" F
Mains water pressure	2.5 bar ~ 5 bar
Operating temperature	5 °C ~ 38 °C <sup>§</sup>
Energy consumption	0.9 A   190 W
Power supply voltage	230 V   50 Hz
Energy saving	✓
Volume	< 38 dB
Unit weight   Shipping weight	18 kg   19 kg
Dimensions (cm) - W x D x H	25 x 41 x 39
Packaging dimensions (cm) - W x D x H	27 x 53 x 49
Units per pallet	18

# Supra 150

## Technical drawings



Supra 150 with cabinet

